

Giorgio Scarpa's Model of a Sea Urchin Inspires New Instrumentation

PINO TROGU

ABSTRACT

Giorgio Scarpa (1938–2012) was an Italian designer, artist and teacher who worked in bionics, topology and rotational geometry. This article describes Scarpa's bionic model of "Aristotle's lantern"—the mouth of the sea urchin. The technical literature on *Echinoidea* lacks a detailed study of its remarkable mouth mechanism. Scarpa's model is the only known analysis and physical analogue of the mechanism. It is a striking example of geometrical analysis and craftsmanship, bridging science and art. Built in the early 1970s and described in 1985 in *Modelli di Bionica*, his model has inspired designs for a biopsy harvester and for a mini-rover to collect soil samples on Mars.

WHO WAS GIORGIO SCARPA?

Giorgio Scarpa taught descriptive geometry for 40 years at high schools in Oristano and Faenza, Italy. He also taught theory of perception at the Institute of Design (ISIA) in Faenza. He worked first as a ceramist and painter before focusing his work on topology and bionics. He published *Modelli di geometria rotatoria* [1] in 1978 and *Modelli di bionica* [2] in 1985. His pioneering work on "Aristotle's lantern" (the mouth parts of the sea urchin) and on rotational geometry allowed him to achieve extraordinary results with ordinary means [3]. Scarpa used almost insignificant materials—paper, glue, elastics—to produce results that are aesthetically and functionally astounding.

Paul Klee, one of Scarpa's early inspirations, noted that "the artist cannot do without his dialogue with nature, for he is a man, himself of nature, a piece of nature and within the space of nature" [4]. Scarpa always pointed out the difficulty in observing nature. It grows from the inside outward, while we can only observe it from the outside. This difficulty did not discourage his curiosity and thirst for understanding—the latter being his aim, rather than use. Scarpa's answer to the question "What does the model of the lantern do?" was always the same: "It does nothing." Yet the model's "action"

did in fact illuminate the basic working of the mouth of the real sea creature.

One can peek at Scarpa's discovery process in an unpublished note titled "Bionics: Exploration between Play and Research":

To play (to explore) is something that costs nothing and brings the mind closer to its desires by asking about the goals and function of every choice, so that every project, before it even becomes an application in its diversified specificity, every project should mean freedom and spontaneity in making, a nonparalyzing immersion, a contrast to what surrounds us, in a seamless process. . . . The image of destroyed sea urchins, their scattered fragments in the sand, and of the live sea urchins observed in their marine habitat, are the source of this study. . . . Not a single sea urchin was sacrificed in order to study it [5].

ARISTOTLE'S LANTERN

The masticatory apparatus of the sea urchin was first referred to as "Aristotle's lantern" in 1734, in Jacob Klein's *Naturalis Dispositio Echinodermatum* [6], after Aristotle's own description in his *Historia Animalium* [7]. Around 1970, Scarpa built a large, physical model (Fig. 1D) of the lantern of the common purple sea urchin.

Modelli di bionica details Scarpa's process of discovery, from schematic models to a fully functional prototype of the lantern [8] 30 cm in height, much larger than his 1–2 cm natural specimens [9]. Although many morphological studies of the lantern exist [10,11], Scarpa's model was until recently the only known physical model [12–14]. It remains the only example that includes components analogous to each of the forty *ossicles* that form the lantern.

In 2014, I built a 3D-printed replica of the model based on Scarpa's original drawings and gave a presentation on it at the Third International Conference on Biomimetic and Biohybrid Systems [15–17]. In 2015 I presented the same replica at the Design of Medical Devices Conference—Europe (DMD EU 2015) in Vienna, Austria [18].

Pino Trogu (artist, educator), School of Design, San Francisco State University, 1600 Holloway Ave., FA 121, San Francisco, CA 94132, U.S.A. Email: trogu@sfsu.edu.

See www.mitpressjournals.org/toc/leon/52/2 for supplemental files associated with this issue.

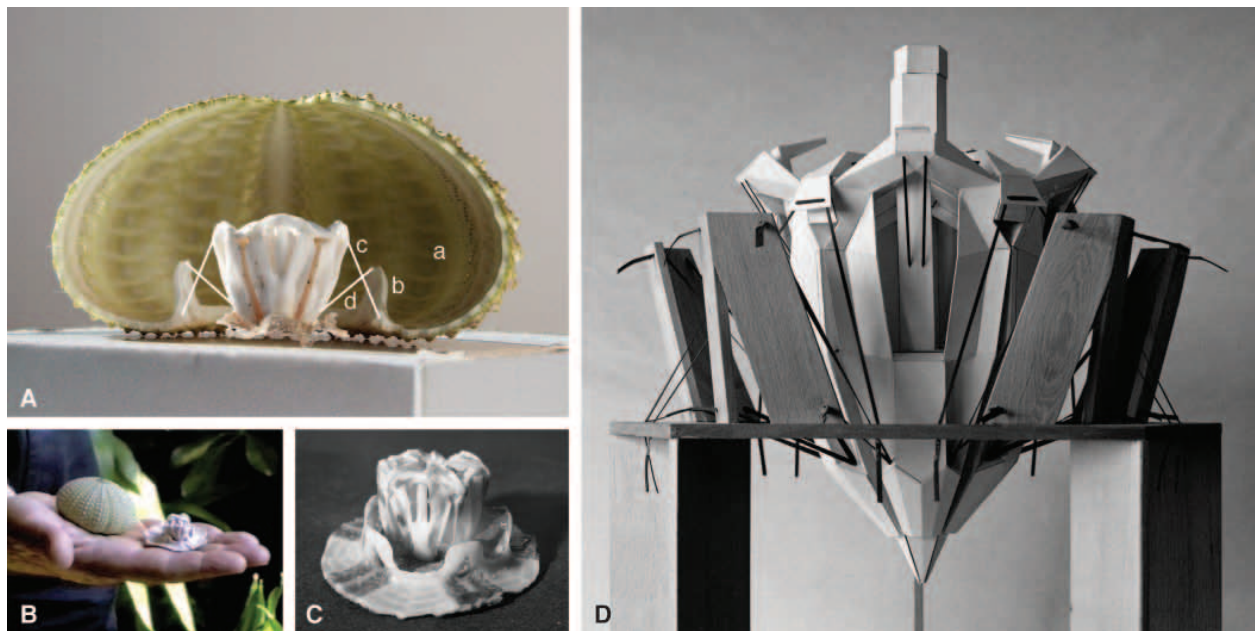


Fig. 1. (A) Aristotle's lantern, shown inside the urchin's *test*, or shell; *a*; five *auricles*, *b*, form the support structure to which the lantern is attached. The white lines represent some of the muscles connecting the lantern to the shell: *protractor* muscles *c* and *retractor* muscles *d* contribute to the lantern's opening and closing. (B) Scarpa's hand holding specimens of a shell and lantern, as seen in a 1994 video [35]. (C) Detail of lantern still attached to shell. (D) Front view of Scarpa's original model, circa 1970. (© Pino Trogu. Photos C and D: Giorgio Cireddu.)

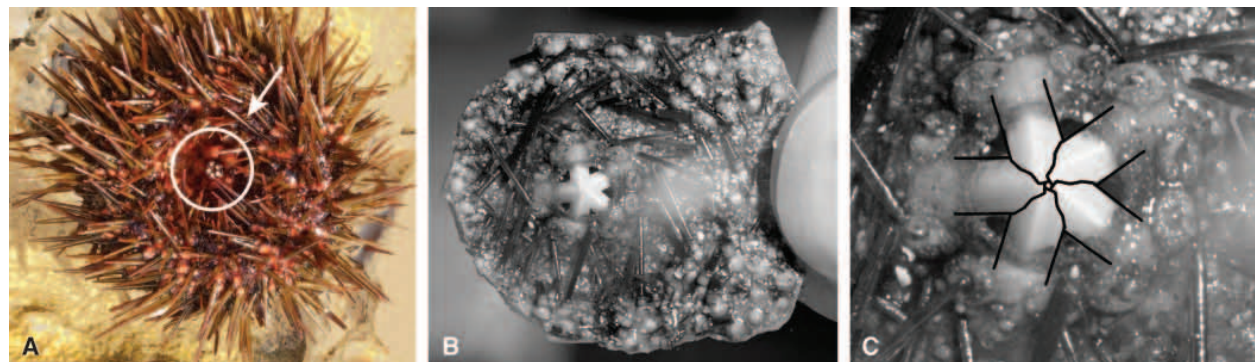


Fig. 2. (A) Upside-down sea urchin, the five teeth visible in the middle. (B) Close-up view of the underside membrane and teeth. (C) Sea urchin's teeth, in closed position, with diagram showing their partial overlap. (© Pino Trogu. Photos B and C: Giorgio Cireddu.)

THE REAL LANTERN: BONES AND MUSCLES; THE MODEL: PAPER AND ELASTICS

The lantern of the sea urchin “consists of forty different ossicles” connected together by “bands or bundles of specialized ligaments” [19], that is, forty bones connected by various muscles. Five jaws contain five teeth that grow continuously yet are firmly in place when grabbing, scraping, boring through rock, cutting and collecting food. When closed, the tips of the teeth form a pattern similar to a lens diaphragm (Fig. 2C). Five *rotulae* act as hinges between jaws, with five other ossicles, the *compasses*, positioned above them. The five ridges or *auricles* that are part of the shell complete the set (Fig. 1A:b).

Scarpa's model of the lantern is highly analogous to the animal's real organ. Every bone element is represented by a corresponding solid piece made of construction paper. It is also remarkable that his lack of formal zoological training

did not stop him from devising a very elegant solution to the complex task of “modeling” the muscles and the overall coordinated movement of the jaws and teeth. Armed with little more than a magnifying glass and specimens found on the beach or donated by friends, he set out to engineer the basic motion of the lantern: jaws and teeth moving forward in unison when opening and moving backward when closing.

Forty-five years later, with Scarpa's model as inspiration, Filip Jelínek realized that its continuous motion would be the key to his design of a novel biopsy harvester [20]. His instrument is just a handful of millimeters in diameter. Due to exigencies of size, Jelínek's prototype compresses the 40 original elements into a single compliant one.

Later, Michael Frank built on Scarpa and Jelínek's work to make a prototype of a Mars ground sampler. It includes the original five hinged teeth and a slider crank system that pushes the teeth open. His model, like Scarpa's,

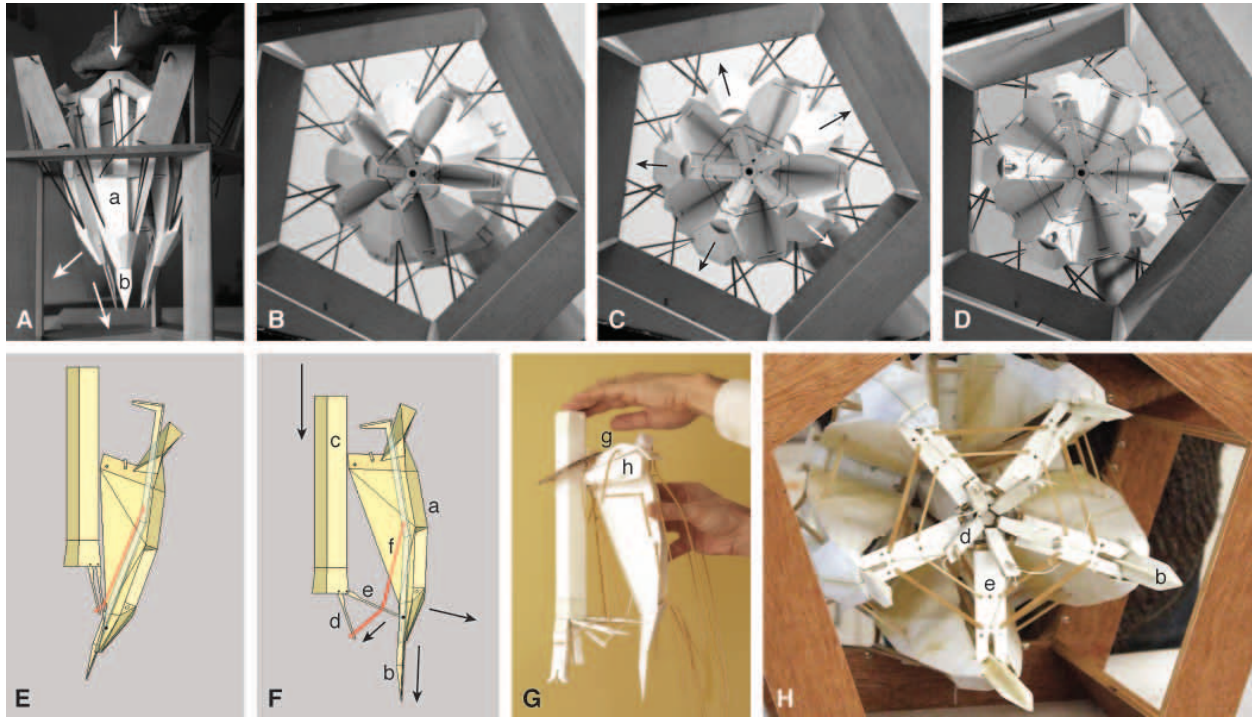


Fig. 3. (A) In Scarpa's model, pushing down the central prism causes the jaws *a* to open and the teeth *b* to slide forward. (B–D) Underside view of the model in various stages of opening. (E) Diagram of system at rest. (F) Downward pressure of prism *c* causes hinged spoke *e* to push jaw *a* laterally, while smaller spoke *d* pulls string *f* through a hole in spoke *e*. The string is attached to tooth *b*, which moves forward as a result. (G) Replica of prism and jaw system. The compass *g* and rotula *h* are visible above the jaw. (H) Lantern's replica in fully opened position. (© Pino Trogu. Photos A–D: Giorgio Cireddu.)

includes elastics that return the teeth to their closed, at-rest position [21].

Let's take a closer look at the inspiration for these later applications—Scarpa's original. Cutting elastic strips out of very thin pure rubber sheets, Scarpa used that simple material as an analogue for the muscles. His model features replacements for all the animal's muscles except for the *protractor* muscles that move the jaws forward. In his model, the jaws are instead pushed open by a prism-and-spokes system. Figure 3F shows how a smaller spoke *d* pulls a thread *f* connected to the tooth *b*, causing it to slide outward. This real-time forward movement of the teeth—a brilliant time-lapse image of the urchin's development—is unique to Scarpa's model. In the real urchin the movement occurs over a lifetime of continuous growth [22] and “self-sharpening” [23], during which the teeth always appear stationary. In the model, elastics become stand-ins for four elements: the *retractor* muscles (Fig. 1A:d) that connect the auricles (Fig. 1A:b) to the lantern, the *interpyramidal* muscles that connect the jaws together, the *compass elevator* muscles that connect the five *compasses*, and the *compass depressors* that connect the compasses to the shell [24].

THE BIOPSY HARVESTER OF JELÍNEK ET AL.

Let's look more closely at the recent applications. Forty-five years after Scarpa, Filip Jelínek et al., at the time all members of the BITE group [25] led by Paul Breedveld of Delft University of Technology, built a “Bioinspired Spring-Loaded Biopsy Harvester” prototype [26] featuring a crown-shaped

“thin extruded steel tube” 0.15 mm in wall thickness and 4.3 mm in diameter, capable of performing, in vitro, a very precise biopsy in less than a millisecond. Jelínek credits Scarpa's model with demonstrating how “the sea urchin can simultaneously cut off and enclose its food in a seemingly unified and continuous motion” [27] and showing that the lantern “is open when protruding outwards and closed when retracted inwards” [28]. In Jelínek's prototype, the crown-shaped cutting tip of the tube is “open” at rest and collapses into a “closed” position when pushed by a spring (Fig. 4). The inward closing motion of the sea urchin is inverted in the biopsy prototype, which employs an “inner taper of [its] cap” that forces the crown cutter to automatically close when propelled forward by a “strong compression spring situated behind it” [29], yet the continuous motion of simultaneously cutting and enclosing the tissue is preserved.

Jelínek's prototype confirms the validity of Scarpa's earlier model as an example of “pure research” that leads to practicality and that also shows the important role played by aesthetics and design during the discovery process. It illustrates the value of research that combines science, art and empathy in a work of intellect and sensibility not motivated solely by practical applications and immediate results.

THE GROUND SAMPLER OF FRANK ET AL.

Recently, Michael Frank, in the group of Joanna McKittrick at the University of California, San Diego, helped lead a team of undergraduate mechanical and aerospace engineers to build a “ground sampler based on sea urchin jaws.” Inspired

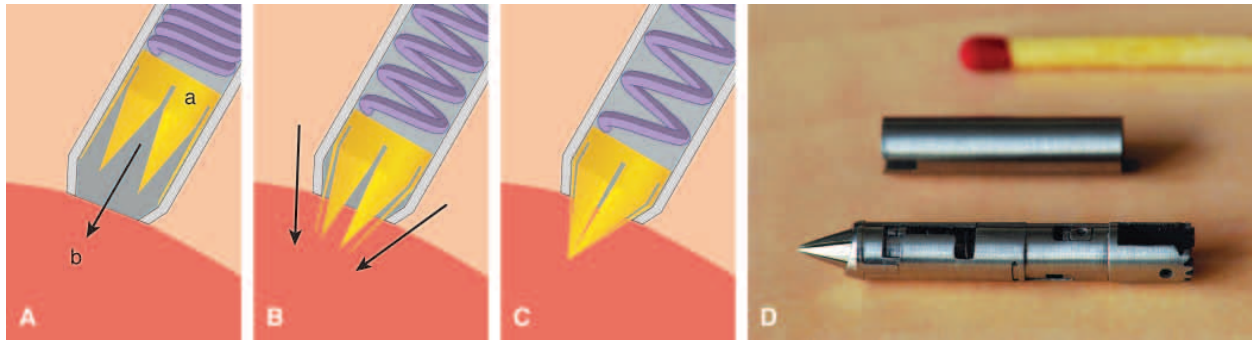


Fig. 4. (A) Jelínek’s crown cutter *a* at rest. The cutter surrounds a 2-mm-diameter fiber-optic bundle (not shown) for in situ optical analysis of tissue *b*. (B–C) Intermediate and final stage of crown closing [36]. (D) “Final manufactured steerable opto-mechanical biopsy harvester prototype.” (© Filip Jelínek. Illustrations A–C redrawn by Pino Trogu, after Jelínek [37]. Photo D: Filip Jelínek, courtesy of Delft University of Technology, The Netherlands, and the Austrian Center for Medical Innovation and Technology, Wiener Neustadt, Austria [38]. Illustrations and photo used by permission.)



Fig. 5. Giorgio Scarpa’s collection of seeds on his workshop desk in Castel Bolognese, Italy, 2002. (© Pino Trogu)

by Scarpa’s original model, Frank’s team built a “fully functional remote controlled sand and rock sampler that utilizes a bioinspired [application of] Aristotle’s lantern” [30]. The sampler might perform “arduous sample collecting tasks” on the surface of Mars, its small scale being useful in aid of a less mobile rover. The mechanism of the model closely mimics the urchin’s fivefold symmetry. It also mimics Scarpa’s model by utilizing a “micro linear actuator” that opens and closes the teeth; a video beautifully shows this process side by side with the motion of the real sea urchin’s mouth [31] (Color Plate B). In Jelínek’s prototype the urchin’s mouth had been a small six-point crown due to manufacturing restrictions, while Frank’s model employs a set of five large curved teeth.

Frank’s paper and video, published by the *Journal of Visualized Research* (JoVE), generously acknowledge Scarpa’s contribution to bionics [32].

CONCLUSION

Scarpa’s goal was not to find practical applications but to understand nature at a deeper level than is afforded by external appearances. He consistently returned to Paul Klee’s *The Thinking Eye* and to Klee’s note on his sketch of a cube’s internal planes. It reads: “The inward plays the dominant part. The whole inward territory designated by the word *content*” [33].

The “inward territory designated by the word *content*”—Klee’s phrase resonated for Scarpa as an understanding that reality is out there but hard to penetrate. A genius like

Leonardo da Vinci literally applied his scalpel to his anatomy sections. A spiritual artist like Klee sought to understand nature through painting. Scarpa, like Klee, collected plants and seeds, nature's humble but important creations (Fig. 5): "If you are going to do research in bionics, don't forget to study seeds, for the knowledge that nature displays in their creation, and for the originality and unpredictability of some of their self-dispersal mechanisms" [34].

Many of Scarpa's bionic models of seed dispersal mecha-

nisms remain unpublished, but whether his focus was on a complex mechanism such as the sea urchin or on seemingly simpler organisms such as seeds, his approach of pure exploration remains valid today. Simply understanding nature, and gaining aesthetic pleasure by constructing analogue systems that are not copies, were in themselves the rewards of his research. Today, as the works of Jelínek and Frank demonstrate, seeds that he scattered more than forty years ago can still generate new discoveries and applications.

Acknowledgments

Many thanks to Oda De Sisti Scarpa, Lorenzo Bocca, Francesco Trogu, Antonio Cirenza, Silvan Linn and Richard Ortiz for assistance with building the urchin replica, to Giorgio Cireddu for photographs of the model and specimens, and to the reviewers who provided valuable criticism and feedback.

References and Notes

- Giorgio Scarpa, *Modelli di geometria rotatoria: i moduli complementari e le loro combinazioni*, Quaderni di design 5, B. Munari, ed. (Bologna: Zanichelli, 1978).
- Giorgio Scarpa, *Modelli di bionica: capire la natura attraverso i modelli*, Quaderni di design 13, B. Munari, ed. (Bologna: Zanichelli, 1985).
- Claudio Marra, "Un software naturale," introduction to the exhibit *Giorgio Scarpa: a natural software*, Ferrara, Art Institute "Dosso Dossi" (1987).
- Paul Klee, *Notebooks Volume 2: The Nature of Nature*, H. Norden, trans.; J. Spiller, ed. (New York: Wittenborn, 1973) p. 6.
- Giorgio Scarpa, "Bionics: Exploration between Play and Research," P. Trogu, trans., (Giorgio Scarpa archive, Castel Bolognese, Italy, c. 1970).
- Jacob T. Klein, *Naturalis Dispositio Echinodermatum* (Gedani: 1734) pp. 41–42 & Fig. 31: https://books.google.com/books/about/Jacobi_Theodori_Klein_Naturalis_disposit.html?id=nChdxBYAySUC (accessed 28 February 2016).
- Aristotle, *Historia Animalium* 4.5.531a3–5 August Immanuel Bekker, ed. (Berlin, 1831), A.L. Peck, trans., Loeb Classical Library, Vol. 2 (Cambridge, MA: Harvard Univ. Press, 1984) pp. 48–49.
- Giorgio Scarpa, *Bionic Models: Understanding Nature Through the Use of Models*, Design notebooks 13 (see Scarpa [2]), P. Trogu, trans.: http://online.sfsu.edu/trogu/scarpa/pdf/bionic_models_complete.pdf (accessed 26 March 2015).
- Pino Trogu, "Bionic Model of Aristotle's Lantern: Giorgio Scarpa, 1985" (1994): https://www.youtube.com/watch?v=xi_D4f5Twm (accessed 29 February 2016).
- Maria D.C. Carnevali and F. Andrietti, "The Aristotle's Lantern of the Regular Sea-Urchins: A Striking Example of Form-Function Relation and Adaptation," in *Form and Function in Zoology*, G. Lanza-vecchia and R. Valvassori, eds. (Mucchi Editore: Modena, 1991) pp. 245–266.
- Maria D.C. Carnevali et al., "The Aristotle's Lantern of the Sea-Urchin Stylocidaris Affinis (Echinoidea, Cidaridae): Functional Morphology of the Musculo-skeletal System," *Zoomorphology* 113, No. 3, 173–189 (1993).
- Filip Jelínek, G. Smit and P. Breedveld, "Bioinspired Spring-Loaded

Biopsy Harvester—Experimental Prototype Design and Feasibility Tests," *Journal of Medical Devices* 8, No. 1, 015002-015002-6 (2014).

- Michael B. Frank et al., "A Protocol for Bioinspired Design: A Ground Sampler Based on Sea Urchin Jaws," *Journal of Visualized Experiments* (110), e53554, doi:10.3791/53554 (2016): www.jove.com/video/53554/a-protocol-for-bioinspired-design-ground-sampler-based-on-sea-urchin (accessed 26 November 2018).
- Taylor Wirth, "Urchin Side by Side Final": <https://www.youtube.com/watch?v=KBSWhIVQadY> (accessed 28 February 2016).
- Pino Trogu and F. Lodato, "Biomimetics in Design" workshop. Cited in *Living Machines 2014, Proceedings of the Third International Conference on Biomimetic and Biohybrid Systems*, A. Duff et al., eds. (Milan, Italy, 30 July–1 August 2014).
- Pino Trogu, "Bionic Model of Aristotle's Lantern by Giorgio Scarpa—Demo 1," presented at Living Machines 2014 (30 July–August 1, 2014, Milan): <https://youtu.be/Qt09s8Fojxo> (accessed 28 February 2016).
- Pino Trogu, "Bionic Model of Aristotle's Lantern by Giorgio Scarpa—Demo 2," presented at Living Machines 2014 [16]: <https://youtu.be/uBsLjx4ToTo> (accessed 28 February 2016).
- Pino Trogu, "Bioinspired Design: Aristotle's Lantern and Models of Rotational Geometry by Giorgio Scarpa," Abstracts, Design of Medical Devices Conference—Europe (DMD EU 2015) (Wiener Neustadt, Austria, 8–9 September 2015).
- Carnevali and Andrietti [10].
- Jelínek [12].
- Frank et al. [13]; Taylor Wirth, "Mars Urchin Final": www.youtube.com/watch?v=keyP6NQwFNs (accessed 28 February 2016).
- Olaf Ellers and M. Telford, "Muscles Advance the Teeth in Sand Dollars and Other Sea Urchins," *Proceedings of the Royal Society B: Biological Sciences* 264, No. 1387, 1525–1530 (1997).
- Christopher Killian et al., "Self-Sharpener Mechanism of the Sea Urchin Tooth," *Advanced Functional Materials* 21, No. 4, 682–690 (2011).
- Carnevali [10]; Carnevali et al. [11]; I.C. Wilkie, C. Carnevali and F. Bonasoro, "The Compass Depressors of Paracentrotus Lividus (Echinodermata, Echinoidea): Ultrastructural and Mechanical Aspects of Their Variable Tensility and Contractility," *Zoomorphology* 112, No. 3, 143–153 (1992).
- BITE, Bio-Inspired Technology Group, Delft University of Technology: www.bitegroup.nl (accessed 15 May 2016).
- Jelínek [12].
- Jelínek [12].
- Jelínek [12].

- 29 Filip Jelínek et al., “Bioinspired Crown-Cutter—The Impact of Tooth Quantity and Bevel Type on Tissue Deformation, Penetration Forces, and Tooth Collapsibility,” *Journal of Medical Devices* **8**, No. 4, pp. 041009–041009–6 (2014).
- 30 Frank et al. [13].
- 31 Wirth [14].
- 32 Frank et al. [13].
- 33 Paul Klee, *Notebooks Volume 1: The Thinking Eye*. Trans. by R. Manheim; ed. by J. Spiller (New York: Wittenborn, 1961) p. 127.
- 34 Giorgio Scarpa (pers. comm. with author, 1988).
- 35 Trogu [9].
- 36 Jelínek et al. [29].
- 37 Jelínek [29].
- 38 Filip Jelínek et al., *Steering and Harvesting Technology for Minimally Invasive Biopsy*, PhD dissertation, doi:10.4233/uuid:18bc7cc6-153b

-4ffe-8da1-474f08a212fc. (Delft University of Technology, The Netherlands, 2015) p. 129.

39 Wirth [14].

40 Wirth [14].

Manuscript received 3 March 2016.

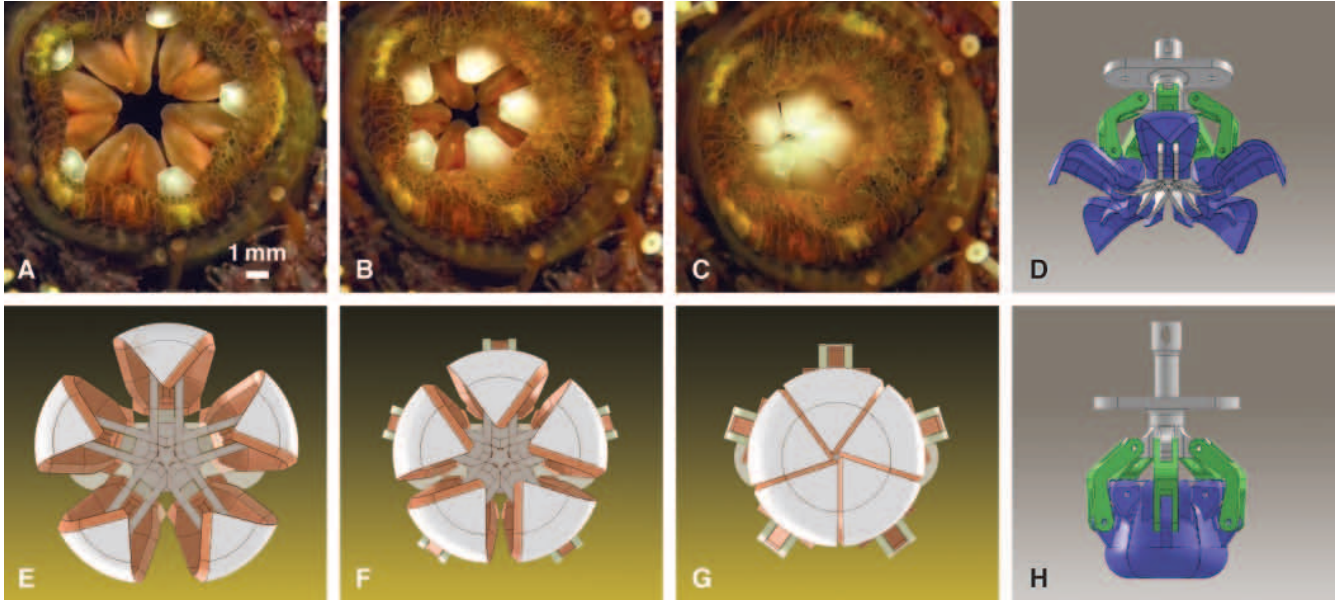
PINO TROGU teaches data visualization, drawing and letterpress at San Francisco State University. He holds an MFA in graphic design from the Rhode Island School of Design, where he was a Fulbright scholar; a BFA in graphic design from Istituto Superiore Industrie Artistiche, Urbino, Italy; and a Diploma in industrial design from Istituto Statale d'Arte Oristano, Sardinia, Italy. He is an author, most recently of “Counting But Losing Count: the Legacy of Otto Neurath’s Isotype Charts,” *Visible Language* **52**, No. 2 (2018) and “The Image of the Book: Cognition and the Printed Page,” *Design Issues* **31**, No. 3 (2015).

ANNOUNCEMENT

Leonardo Art Science Evening Rendezvous (LASER)

Since 2008, the Leonardo Art Science Evening Rendezvous (LASER) series of lectures and presentations on art, science and technology has provided spaces for progressive thought leaders to come together to form community and explore the intersections of disciplinary thinking. Owing to its success and popularity, LASER has expanded beyond its birthplace in the San Francisco Bay Area, first to the U.S. East Coast, then across the Atlantic to London—the home of the first European LASER—and today continues to expand to new locations nationally and internationally. We thank all of those who have spoken at, participated in or attended LASER events throughout the years. We owe a special thank you to Piero Scaruffi, LASER founder and chair, for his inspiration and continued dedication, and to the growing list of LASER hosts around the world. To follow LASER events, see www.leonardo.info/laser-talks.

COLOR PLATE B: **GIORGIO SCARPA'S MODEL OF A SEA URCHIN INSPIRES NEW INSTRUMENTATION**



A–C and E–G: Still frames from a video showing the opening and closing of the sea urchin’s mouth and of the ground sampler prototype built by Frank et al. [reference 39 in article]. D and H: Side views of the prototype in open and closed position [reference 40]. (© Michael Frank. Illustrations: Michael Frank and Taylor Wirth, courtesy of the University of California, San Diego. Sea urchin photos: Yoshihiro Sawada. Used by permission.) (See article in this issue by Pino Trogu.)



Johnny Carson Center for Emerging Media Arts

LAUNCHING AUGUST 2019

Inviting enterprising faculty and industry leaders to inquire.

The Johnny Carson Center for Emerging Media Arts, a newly established \$57 million facility and academic degree at the University of Nebraska-Lincoln, is re-envisioning the university for the 21st century.

Our creative pioneers will use technology and creativity, including AI, Data-Driven Innovation, and Augmented and Virtual Reality, to innovate, to solve human-scale problems, and to tell breathtaking stories that stimulate, provoke and inspire.

We are seeking exceptional faculty and industry partners who share our vision and wish to collaborate. Learn more at carsoncenter.unl.edu. Contact Founding Director, Megan Elliott at megan.elliott@unl.edu or +1-402-472-2615.

UNIVERSITY OF
Nebraska
Lincoln

N JOHNNY CARSON CENTER
FOR EMERGING MEDIA ARTS

The University of Nebraska does not discriminate based upon any protected status. Please see go.unl.edu/nondiscrimination.