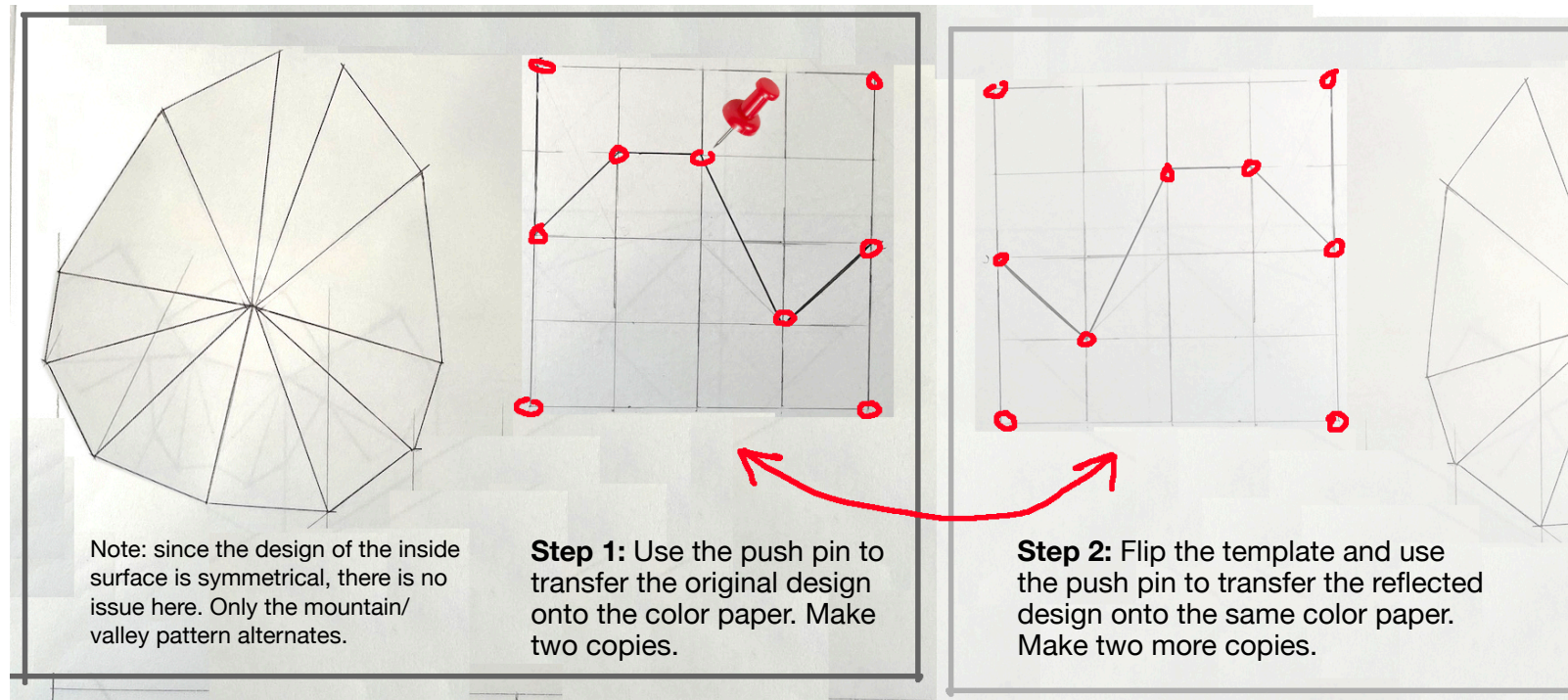


## Trogu — DES 320 Drafting & Sketching

Cube section project

Update 2024-04-04



H.C., a student in Section 2, pointed out that because the card stock paper we are using for the cube has two different surfaces, one textured and one smooth, transferring the same design with the push-pin four times would result in two faces of the cube having a textured surface and two faces having a smooth surface.

That's because the initial design gets mirrored in the sequence, which is equivalent of flipping the sheet of paper being used, and since the two sides of the paper are different, also the cube faces would be different.

To avoid this, use the push pin first on the original design on two copies of the colored paper, then flip the "cookie cutter" sheet and push pin second the flipped design on two other copies of the colored paper. So the design gets flipped, not the colored paper.

Also, since it's easier to draw on the smooth side of the paper, you may want to make the cube with the smooth side showing instead of the textured side. It's up to you.

Pino

