

The relationship between animal color and character

Student research: color matrix. Final project: a concrete book on the color of some butterflies in the United States. Sample project from the course:

Color: a system of connections

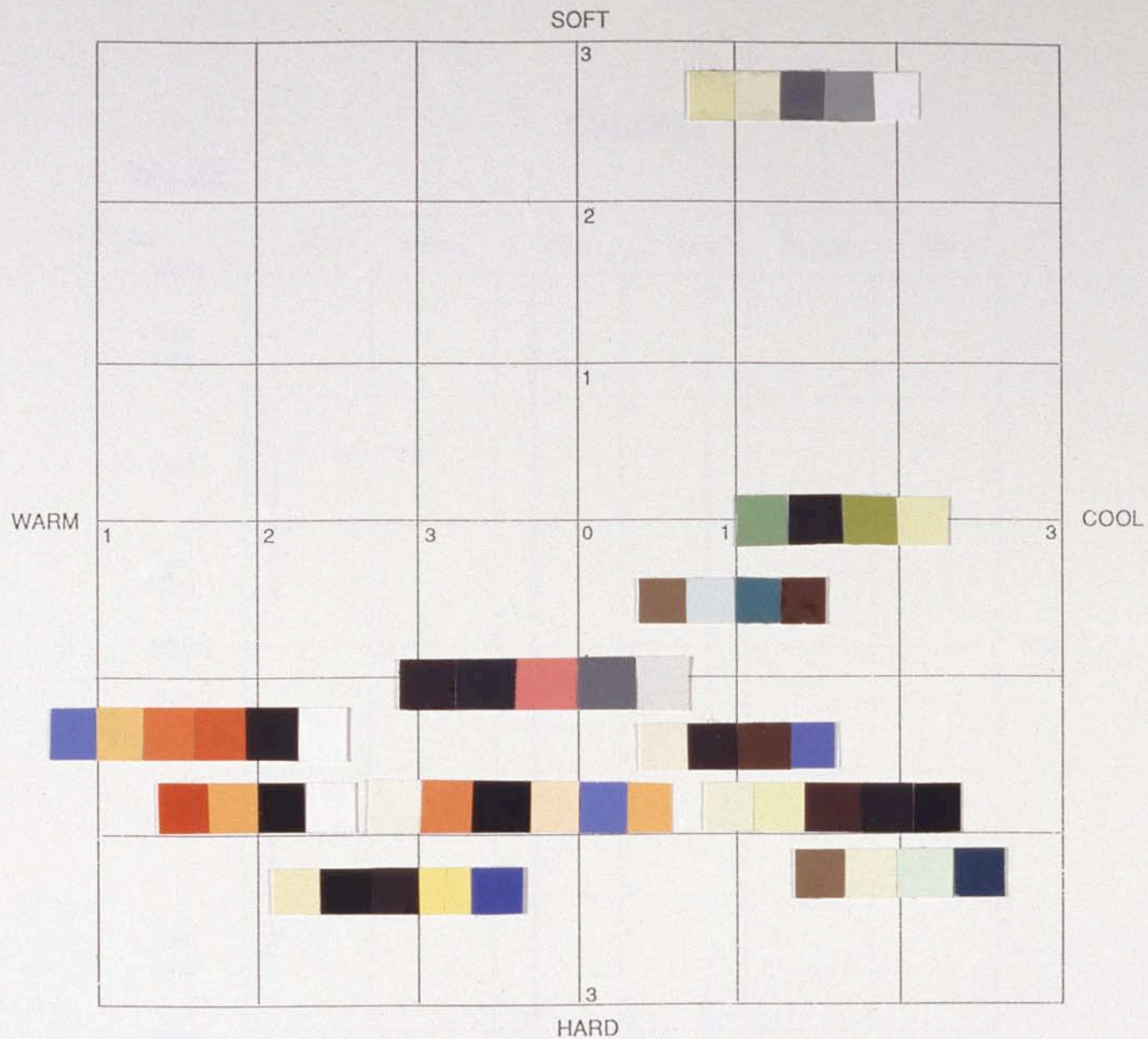
Graduate seminar conducted by Pino Trogu

School of the Arts

Virginia Commonwealth University, Richmond, Virginia.

Spring 1991

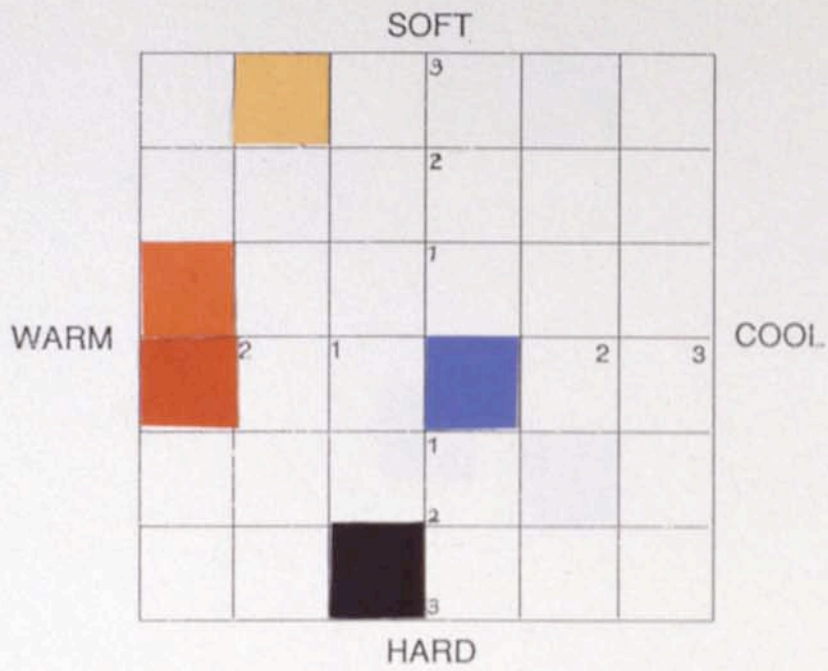
Student: Kim Sookie



The color combinations display the full array of colors in equal proportions.

This color combinations help me when I apply these color combinations in concrete situations of certain butterflies which I chose and this scale help me understand the relationship within and between each section.

As a result of this diagram, most of butterflies have bottem group color combinations which are dark-shades value.



American Painted Lady

Dynamic - bring to mind happy, sunny outdoorsy feeling
bright, cheerful color full of life

Romantic - dreamy (wings
soft and mid woods
versatile and harmonious color

Mustard White

Butterfly

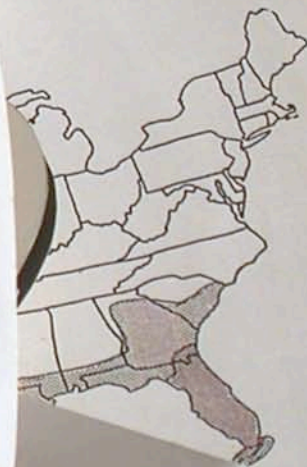
The Mustard White has two seasonal forms. The spring-brood butterflies have the ventral surface of the hind wings veined with gray and gray-green, while the summer-generation individuals are immaculate. As in other dimorphic butterflies, the spring form rears caterpillars that develop during short periods.

Range

Members of the Mustard White complex in both Eurasia and North America. The species ranges from New England to the Rocky Mountains and the Great Lakes area to the Pacific Coast of California. It ranges north through northern Alaska and is the only butterfly found on the Aleutian Islands.

Habitat

In the eastern states, the Mustard White is found in deciduous woods, bogs, and open fields. It is confined to wooded habitats in the spring. It is found in Transition and Canadian Life Zones in the East, but is found up to Arctic Alpine situations in Alaska.



Mourning Cloak
Butterfly
With its dorsal purplish black ground color (broad yellow margins and surrounding raised violet individuals) and understating raised black the appropriately named Mourning Cloak has no other butterfly. The wings are alike in appearance. It varies little geographically.

Range
The Mourning Cloak occurs almost everywhere throughout temperate and subarctic North America and ranges south to central Mexico and the highlands in the South. In Florida and the states, the majority of records represent overwintering individuals.

Habitat
The butterfly is found in wooded, open, and suburban areas, anywhere that suitable hosts occur. Riparian situations are favored. In the butterfly's range, there are probably few spots that have not been grazed by a Mourning Cloak.

